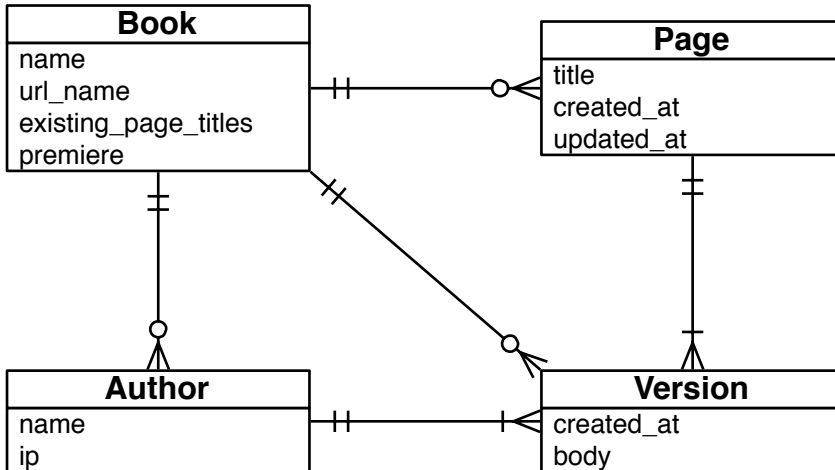


# i2 to Ruse data mapping, for migration

v0.2 JMF 15th October 2006

## i2 model

i2 has a simple data model:



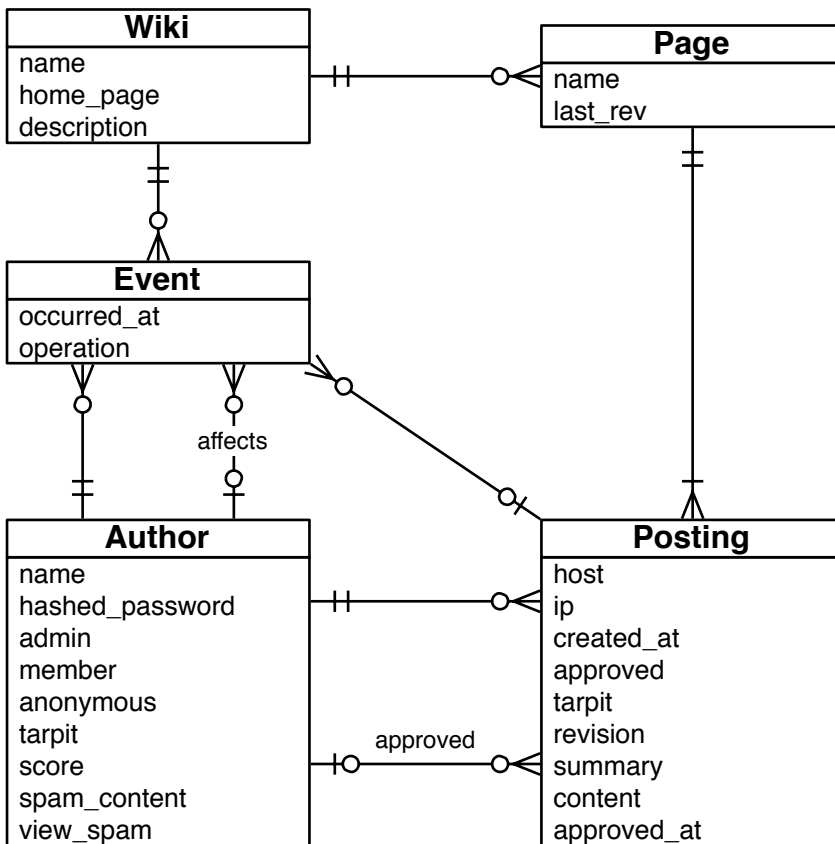
Book represents a wiki, and contains Pages. Pages have Versions, ordered by creation date/time.

Author is a unique representation of a user name and IP address combination.

**Note:** I've guessed the optionality of some of the associations, in both models. This shouldn't matter for migration.

## Ruse model

Ruse has a more complex model, catering for spam detection and having different categories of author with different levels of trust:



Wiki, Page and Posting correspond to Book, Page and Version in i2, but Posting carries much more information, to support spam detection and moderation. The summary attribute holds a summary of the change in a given Posting, rather than a summary of the content. Author represents a real author in Ruse, whereas in i2 it just represents a name/ip address combination. Again, Author has many attributes related to spam detection and moderation. Events provide an audit trail of activity in Ruse, needed for moderation and for promoting Authors to trusted status. The two associations between Author and Event represent the Author causing the Event and (optionally) an Author affected by the Event.

## Mapping, for migration

### Overview

Only one wiki is being migrated, so the Ruse Wiki record can be hand-coded.

There is no trustworthy Author information in i2 - a specific (hand-coded) "i2 Importer" Author will be used for the migrated content, and the "byline" information from the i2 page versions (name, ip, date/time) will be placed in the summary fields of the new Postings.

*Assume that the same Author can act as the approver for all imported content.*

Events in Ruse can be expired independently of the Postings they relate to - I assume that we don't need to create Events corresponding to the importing of content. (Jim has confirmed this.)

The main focus of data mapping for migration is then on Pages and Postings.

### Detail

A Page must be created for any i2 Page which has one or more Versions approved for migration.

Page attribute in Ruse	Source	Notes
id	autoincrement	Migration is done into an empty database. Follow-on updates can be done so long as they only deal with later content.
wiki_id	id of Ruse Rails wiki	The id of the wiki which has been explicitly created at the start of migration.
name	i2 page title	Ruse has 128 character limit, i2 has 255 character limit. Check existing i2 title lengths - truncation would break bookmarks and links in wiki pages.  <i>Checked 15th October 06</i>
last_rev	Computed as part of migration.	Each Page will have its Postings created from approved i2 page versions, in chronological order. Revision numbers will be set accordingly on the Postings, and when all have been done the Page's last_rev value can be set.  <i>Working assumption is that we only bring one approved version across, for each good page. It is possible that we should also bring versions beyond the last review date/time across into Ruse, marking them as requiring moderation. Would these postings then require corresponding Events?</i>

A Posting must be created for any i2 Version which has been approved for migration.

Posting attribute in Ruse	Source	Notes
id	autoincrement	Migration is done into an empty database. Follow-on updates can be done so long as they only deal with later content.
page_id	id of Ruse Page for this Posting	Postings will be created while handling an i2 Page, and the Ruse Page may be created when first found to be needed.
author_id	id of Ruse 'i2 Importer' Author	This Author has been explicitly created at the start of migration.
approver_id	id of Ruse 'i2 Importer' Author	<i>Jim to advise.</i>
host	blank? null?	<i>Jim to advise.</i>
ip	i2 version.author.ip	
created_at	date/time of import	Set automatically if using AR.
approved	true	<i>Unless this version is later than the last review point for the page, so still requires approval.</i>
tarpit	false	
revision	Computed as part of migration	Each Page will have its Postings created from approved i2 page versions, in chronological order. Revision numbers will be set accordingly on the Postings.
summary	i2 version.author.name i2 version.author.ip i2 version.created_at	Format similarly to "byline" display on i2 pages?  <i>But this will often just be the details of the last rollback of a spammed page. Does it really add value? Alternative is to search for the earliest page version which has the approved content.</i>

Posting attribute in Ruse	Source	Notes
content	i2 version.body	<i>Do we stick with :text? Some pages in the Rails wiki have hit the 64K limit. Does Ruse warn the user when this happens?</i>
approved_at	date/time of import	<i>Unless this version is later than the last review point for the page, so still requires approval.</i>